

# Past papers

for graded examinations  
in music theory 2011

## Grade 6

# Theory of Music Grade 6

November 2011

Your full name (as on appointment slip). Please use BLOCK CAPITALS.

\_\_\_\_\_

Your signature

Registration number

\_\_\_\_\_

\_\_\_\_\_

Centre

\_\_\_\_\_

## Instructions to Candidates

1. The time allowed for answering this paper is **three (3) hours**.
2. Fill in your name and the registration number printed on your appointment slip in the appropriate spaces on this paper, and on any other sheets that you use.
3. **Do not open this paper until you are told to do so.**
4. This paper contains **seven (7) sections** and you should answer all of them.
5. Read each question carefully before answering it. Your answers must be written legibly in the spaces provided.
6. You are reminded that you are bound by the regulations for written examinations displayed at the examination centre and listed on page 4 of the current edition of the written examinations syllabus. In particular, you are reminded that you are not allowed to bring books, music or papers into the examination room. Bags must be left at the back of the room under the supervision of the invigilator.
7. If you leave the examination room you will not be allowed to return.

Examiner's use only:

|       |  |
|-------|--|
| 1     |  |
| 2     |  |
| 3     |  |
| 4     |  |
| 5     |  |
| 6     |  |
| 7     |  |
| Total |  |

**Section 1** (10 marks)

Boxes for  
examiner's  
use only

1.1 Write the time signature that shows 4 dotted crotchet beats in a bar. \_\_\_\_\_

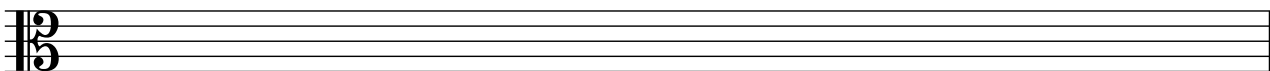
1.2 Which of the following statements is correct, a], b] or c]? \_\_\_\_\_

a] The descant recorder sounds a minor third lower than written.

b] The descant recorder sounds an octave higher than written.

c] The descant recorder sounds a perfect fifth higher than written.

1.3 On the staff below write, in minims, the Aeolian mode ascending, beginning on F. Do not use a key signature, but write in the necessary accidentals.




1.4 Which two consecutive chords form a plagal cadence? \_\_\_\_\_

1.5 What is the mediant note of E $\flat$  minor? \_\_\_\_\_

1.6 Write one of these notes enharmonically so that the resultant interval is a diminished fifth.



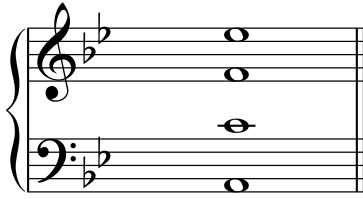

1.7 Give two possible names for this interval.



\_\_\_\_\_

Boxes for  
examiner's  
use only

1.8 Write the appropriate Roman numeral beneath the following chord:



(Bb major)

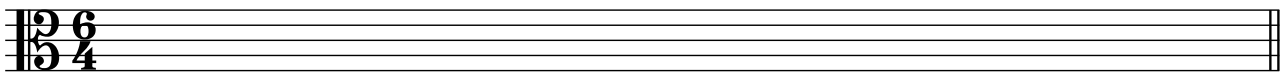
1.9 Name one Baroque composer who did not write operas. \_\_\_\_\_

1.10 What are the notes of the augmented triad built on B? \_\_\_\_\_

\_\_\_\_\_

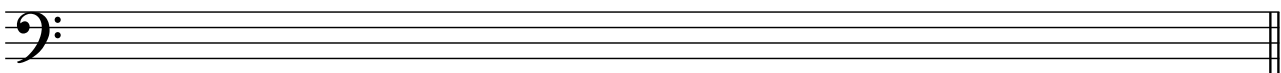
**Section 2** (15 marks)

2.1 Write the following one-octave scale, ascending and descending, in a rhythm to fit the given time signature. Use rests between some degrees of the scale. Do not use a key signature, but write in the necessary accidentals.



G melodic minor

2.2 Using groups of four semiquavers, write a broken chord of VI in D minor ascending. Use a key signature.



2.3 Using the appropriate key signature, write the following passage as it sounds when played by a classical guitar.

Boxes for examiner's use only

**Section 3** (15 marks)

3.1 Write an 8-bar melody in E $\flat$  major for bassoon. You may use the following as a start if you wish:

Flowing

**Section 4** (15 marks)

Boxes for  
examiner's  
use only

4.1 Make a harmonic sequence by repeating this chord progression one note higher each time to complete the phrase.

(C major)



**Section 5** (10 marks)

5.1 Using semibreves, write out 4-part chords for SATB using the chords shown by the Roman numerals.

(F# minor)

VIb

(Db major)

Vc



*(Please turn over for section 6)*

**Section 6** (15 marks)

Boxes for  
examiner's  
use only

6.1 Label the chords of this phrase with Roman numerals below the staff and chord symbols above, and complete it with an appropriate cadence.

Traditional



**Section 7** (20 marks)

Look at the following movement and answer the questions on page 7.

Largo

Locatelli

Boxes for  
examiner's  
use only

- 7.1 What is the key of this music? \_\_\_\_\_
- 7.2 Write the appropriate Roman numerals below the first chord in bar 2.
- 7.3 To which key has the music moved by bar 6? \_\_\_\_\_
- 7.4 What type of chord is used on the sixth quaver beat of bar 5? \_\_\_\_\_  
\_\_\_\_\_
- 7.5 Draw a circle around the accented passing note in the first bar of the top stave.
- 7.6 In what inversion is the chord on the fifth quaver beat of bar 13? \_\_\_\_\_
- 7.7 Give the numbers of **two** bars in which a I<sub>c</sub>-V progression occurs. \_\_\_\_\_
- 7.8 Which type of scale can be found in the left hand of bars 10-11? \_\_\_\_\_  
\_\_\_\_\_
- 7.9 Write the appropriate chord indication above the third quaver beat of bar 7.
- 7.10 What does **Largo** mean? \_\_\_\_\_