

# Past papers

for graded exams  
in music theory 2012

## Grade 5

# Theory of Music Grade 5

November 2012

Your full name (as on appointment slip). Please use BLOCK CAPITALS.

\_\_\_\_\_

Your signature

Registration number

\_\_\_\_\_

\_\_\_\_\_

Centre

\_\_\_\_\_

## Instructions to Candidates

1. The time allowed for answering this paper is **three (3) hours**.
2. Fill in your name and the registration number printed on your appointment slip in the appropriate spaces on this paper, and on any other sheets that you use.
3. **Do not open this paper until you are told to do so.**
4. This paper contains **seven (7) sections** and you should answer all of them.
5. Read each question carefully before answering it. Your answers must be written legibly in the spaces provided.
6. You are reminded that you are bound by the regulations for written examinations displayed at the examination centre and listed on page 4 of the current edition of the written examinations syllabus. In particular, you are reminded that you are not allowed to bring books, music or papers into the examination room. Bags must be left at the back of the room under the supervision of the invigilator.
7. If you leave the examination room you will not be allowed to return.

Examiner's use only:

1 (10)	
2 (15)	
3 (10)	
4 (15)	
5 (15)	
6 (15)	
7 (20)	
Total	

## Section 1 (10 marks)

Boxes for  
examiner's  
use only

Put a tick (✓) in the box next to the correct answer.

### Example

Name this note:



A  D  C

This shows that you think C is the correct answer.

1.1 Name the circled note:



A $\flat$   E $\flat$   G

1.2 Which is the correct time signature?



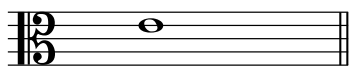
$\frac{3}{2}$    $\frac{4}{2}$    $\frac{6}{4}$

1.3 Which rest(s) should be put below the asterisk (\*) to complete the bar?



$\frac{3}{8}$    $\frac{2}{8}$    $\frac{1}{8}$

1.4 Which note is the enharmonic equivalent of this note?



F $\flat\flat$   D $\times$   D $\sharp$

1.5 Which note is the supertonic of the minor key shown by this key signature?



B $\flat$   G $\flat$   G

Put a tick (✓) in the box next to the correct answer.

Boxes for  
examiner's  
use only

1.6 Which note is the dominant of the major key shown by this key signature?



A  E  D

1.7 *morendo* means:

hushed  softly  dying away

1.8 Which of these ornaments should be played as follows?



1.9 Which Roman numeral fits below this dominant chord?



V  vb  Vb

1.10 Name this chord progression in E minor.

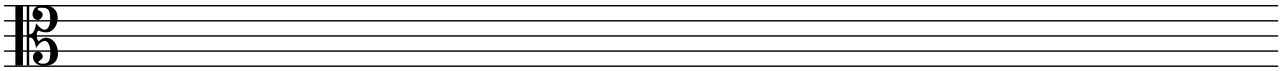


I-V   
ii°b-V   
ii-v

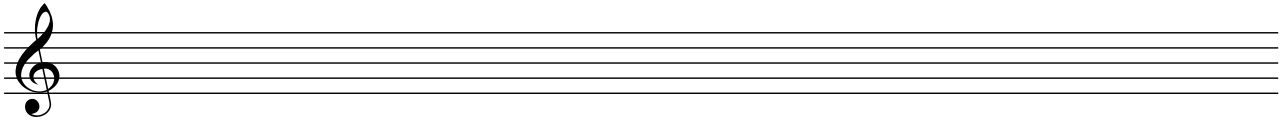
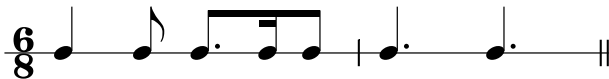
**Section 2** (15 marks)

Boxes for  
examiner's  
use only

2.1 Write a one-octave G pentatonic major scale in crotchets, ascending then descending.



2.2 Write the key signature of the key shown, then write its one-octave arpeggio in the rhythm given below:



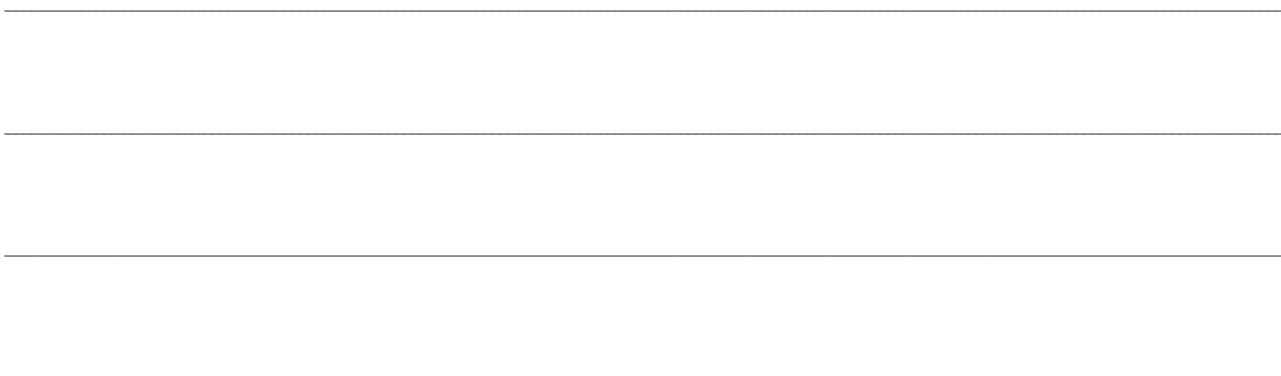
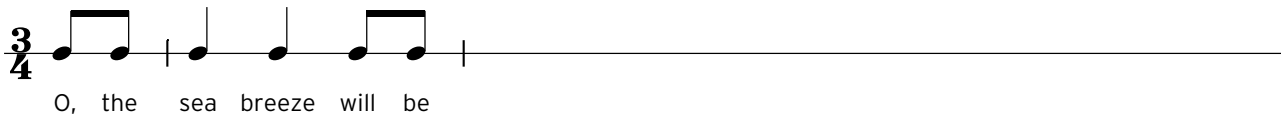
Bb major descending then ascending.

**Section 3** (10 marks)

3.1 Continue the rhythm to fit the following phrase.

O, the sea breeze will be steady  
and the tall ship's going trim,  
And the dark blue skies are paling,  
and the white star's burning dim.

Masefield

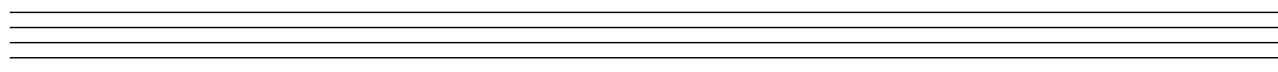


**Section 4** (15 marks)

Boxes for  
examiner's  
use only

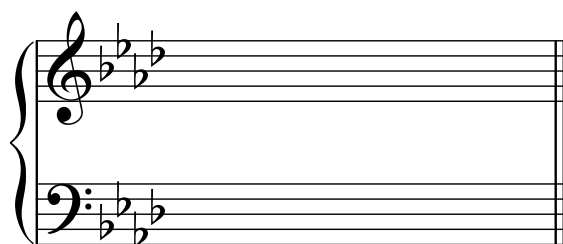
4.1 Transpose this melody up a perfect 4th. Use a key signature.

Chabrier



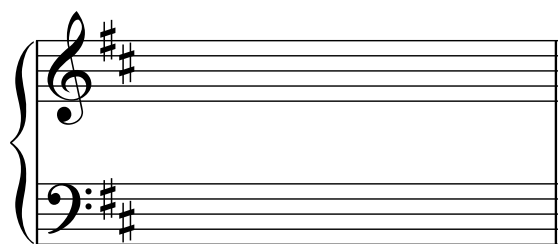
**Section 5** (15 marks)

5.1 Using minims, write out 4-part chords for SATB using the chords shown by the Roman numerals below.



(F minor)

Vc



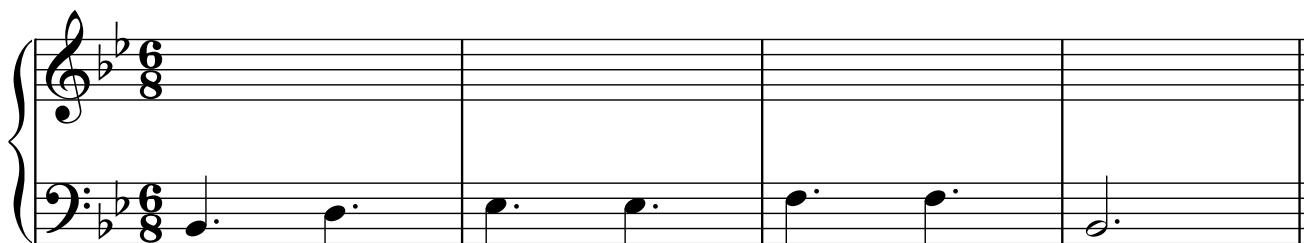
(D major)

IVb



**Section 6** (15 marks)

6.1 Use notes from the chords shown by the Roman numerals to write a tune above the bass line. Decorate your tune once you have the main harmony notes in place.



I

Ib

IV

iib

Ic

V7

I



## Section 7 (20 marks)

Look at the following piece and answer the questions opposite.

Mozart

**Larghetto**

1

5

9

13

*p* *fp fp* *cresc.* *p* *f* *p* *f* *p*

*tr*

\*

- 7.1 In which key is this piece? \_\_\_\_\_
- 7.2 To which related key has this piece modulated to by bar 8? \_\_\_\_\_
- 7.3 Describe the harmonic rhythm in bars 1–4. \_\_\_\_\_  
\_\_\_\_\_
- 7.4 Write an appropriate Roman numeral below the chord on the second beat of bar 4.
- 7.5 Name the interval between the two notes in the chord marked with an asterisk (\*) in bar 5 (bass part).  
\_\_\_\_\_
- 7.6 Put a bracket (┌─) over two places where the treble part is syncopated.
- 7.7 Circle an accented passing note in bar 4 (treble part).
- 7.8 What does **Larghetto** mean? \_\_\_\_\_  
\_\_\_\_\_
- 7.9 In what form is this piece composed? \_\_\_\_\_
- 7.10 In which bars are there four notes of a chromatic scale put one after another (treble part)?  
\_\_\_\_\_

Boxes for  
examiner's  
use only